



EFFICIENCY  
DOES NOT  
EQUAL SIZE

**” I need a small ventilation unit -  
but not a low-duty  
ventilation unit.”**



# Enervent Salla

SMALL SIZED BALL OF FIRE

Enervent Salla is a perfect ventilation unit for spaces that many other units can't fit into. Going short of size does not mean going short of features – Salla is proof that efficiency does not equal size.

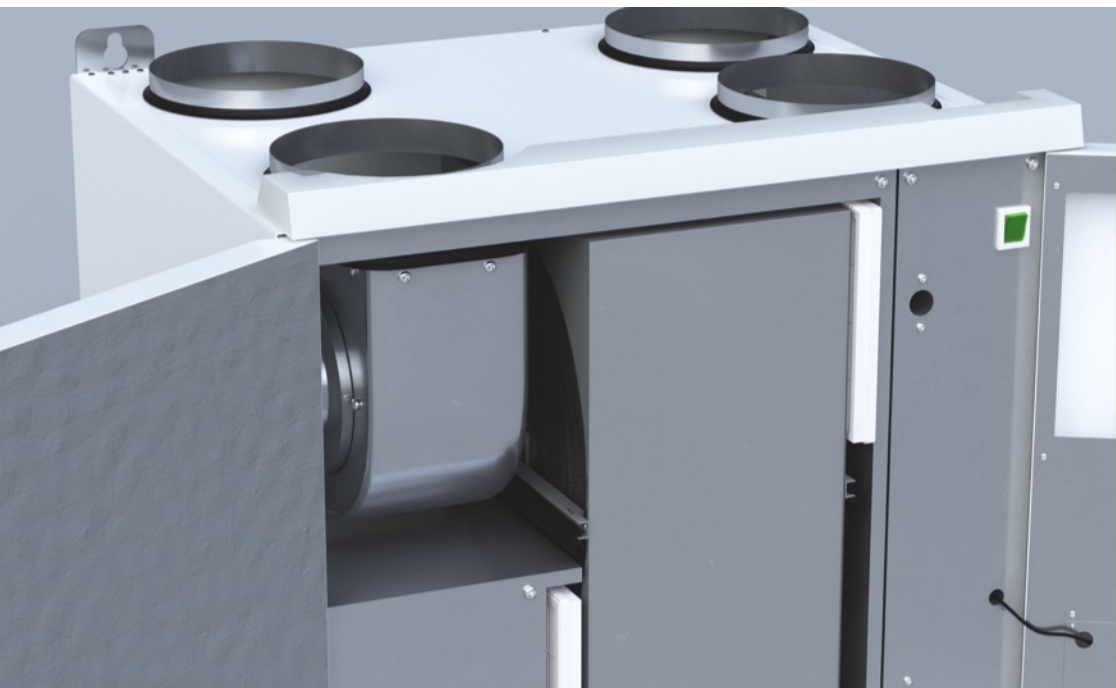


## **SMALL UNIT, GREAT PROWER**

Larger exterior dimensions do not always mean a stronger device. Enervent Salla is a real ball of fire in a small casing.

Go short of size - not quality.





## FORGET DE-FROSTING

We found the point where freezing begins. This enabled us to design Enervent Salla's structure and airflows so that this unit doesn't freeze. When avoiding automatic defrosting, Enervent Salla can continually work energy efficiently. Salla is designed for Nordic conditions.



## WHEN SPACE IS LIMITED

Enervent Salla is lower than most ventilation units and it has a built-in water lock for condense water. Due to these features, no installation space is required under the unit. It can i.e. be placed over a washing tower.



Fits in small spaces (580x500x490 mm)

Maximum air flow over 360 m<sup>3</sup>/h (100 Pa)

Available with cooker hood connection



Casing painted zinc coated steel sheet

Built-in water lock for condense water

Class A EcoDesign 2018

**”One ventilation unit –  
no ice, thank you.”**

*Enervent Salla is design for Nordic conditions.*



**”This is the only ventilation unit  
that fits into my flat.”**

*Enervent Salla fits above the washing tower.*



Despite its small exterior dimensions, Salla is capable of the same power as a bigger unit.



Enervert Salla doesn't freeze. It is designed for Nordic conditions.



Hardly any installation space is needed under the Salla unit. It fits i.e. above the washing tower.

**Enervert Salla – efficiency does not equal size.**