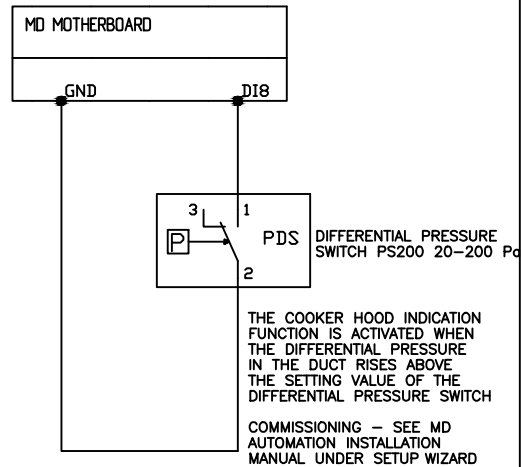
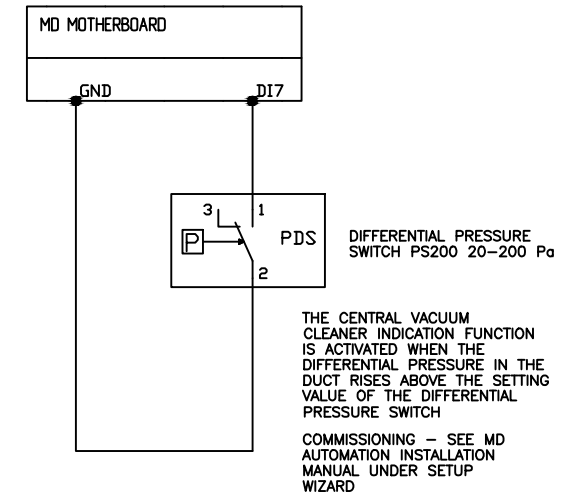


### COOKER HOOD INDICATION



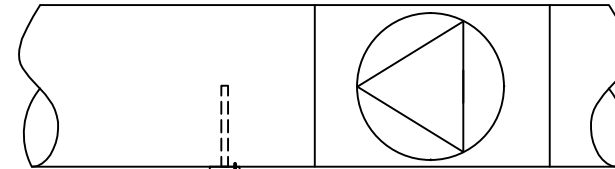
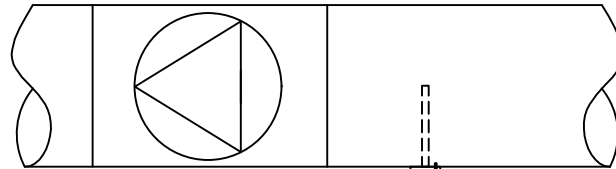
### CENTRAL VACUUM CLEANER INDICATION



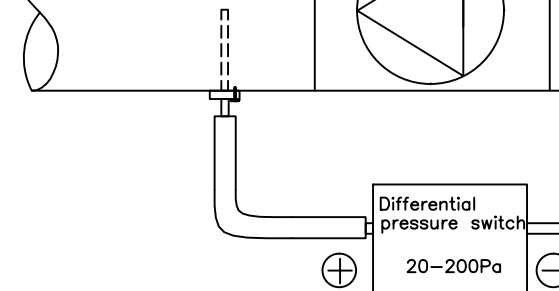
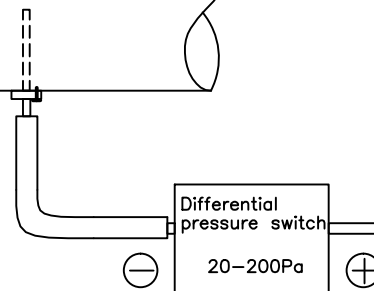
### DIFFERENTIAL PRESSURE SWITCH INSTALLATION:

OPTION 1:  
IF THE DIFFERENTIAL PRESSURE WILL BE MEASURED ON THE SUCTION SIDE (BEFORE THE FAN), THE DIFFERENTIAL PRESSURE SWITCH'S MINUS (-) MEASURING CONNECTION IS CONNECTED TO THE DUCT. THE PLUS (+) MEASURING CONNECTION WILL NOT BE INSTALLED AND WILL MEASURE THE PRESSURE IN THE ROOM.

OPTION 2:  
IF THE DIFFERENTIAL PRESSURE WILL BE MEASURED ON THE DELIVERY SIDE (AFTER THE FAN), THE DIFFERENTIAL PRESSURE SWITCH'S PLUS (+) MEASURING CONNECTION IS CONNECTED TO THE DUCT. THE MINUS (-) MEASURING CONNECTION WILL NOT BE INSTALLED AND WILL MEASURE THE PRESSURE IN THE ROOM.



NOTE! THE DIFFERENTIAL PRESSURE SWITCH MUST BE INSTALLED IN A VERTICAL POSITION.



Drawn by MK	Check by	Appr by		File	Date 25.11.2013	Page 1
MD CONTROL Cooker hood and central vacuum cleaner indication				Name ELECTRIC DIAGRAM	Weight kg	
Ensto Enervent Oy Kipinätie 1   FIN-06150 PORVOO Tel +358 207 528 800   enervent@ensto.com				AHU UNIT'S EXTERNAL CONNECTIONS	Change A	Sheet

Appr by