

Enervent HP



Technical Data and additional
information to Enervent eAir
Installation Instructions



enervent

Contents

READ ME FIRST.....	4
GENERAL	4
MAINTENANCE.....	4
TECHNICAL DATA	5
SERVICE RECORD FOR HEAT PUMP UNIT	6
WIRING DIAGRAMS	7
CONTROL DIAGRAM	14

EN

READ ME FIRST

This document is intended for everyone involved in installation of Enervent ventilation units. The equipment described in this manual is to be installed by skilled persons only, according to the instructions given in this manual, Enervent eAir Installation Instructions, and local law and regulations. Failure to comply with instructions in this manual and Enervent eAir Installation Instructions will void the warranty of the equipment, and possibly result in harm to people or property.

The equipment described in this manual is not to be used by persons (including children) with reduced physical, sensory or mental capabilities, or lack of experience and knowledge, unless they have been given supervision or instruction concerning use of the equipment by a person responsible for their safety.

NOTE!



NOTE: The Unit must not be tilted more than 45° during transport.

WARNING!



WARNING: Before operating the heat pump in the Pallas HP models, remove the transport support for the compressor mounting plate as indicated in the picture below. Pull the rod completely out from the compressor mounting plate to disengage the transport support.



WARNING!



WARNING: Airflow calibration must be done before engaging the heat pump. In Pegasos and Pallas HP eAir units the heat pump is engaged from inside the electrical connection box: Circuit breaker **F1**.

GENERAL

Enervent Pelican HP, Pegasos HP and Pallas HP are air handling units that consists of (among other components) a rotating heat recovery wheel and an extract air heat pump. Units are designed to recover heat energy from the extract air which is blown out of the building. Units also cool the supply air depending the adjustments and circumstances. Units are not designed to function as a primary heat source of the building.

NOTE!



NOTE: For the heat pump to work properly the extract air must be warm enough (extract air to unit must be at least +20 °C).

Because the integrated extract-air-source heat pump does not require a separate outdoor unit, it is also suitable for sites where the installation of outdoor units is restricted by regulations on façades. The unit is suitable for both new buildings and renovation projects.

MAINTENANCE

For maintenance see Enervent eAir Installation instructions.

NOTE!



NOTE: The heat pump in the ventilation unit may contain more than 2.39 kg of R410A HFC refrigerant. The European Union's F-gas Regulation No 517/2014 states that the operators of equipment containing more than 2.39 kg of R410A HFC refrigerant are responsible for maintaining a service record of such equipment and carry out annual refrigerant leakage checks by qualified personnel.

NOTE!



NOTE: Ventilation units equipped with Emerson© EC3-D73 Digital superheat controller (concerns Pegasos and Pallas HP units) contains a VRLA battery= valve regulated rechargeable lead-acid battery. The battery must NOT be disposed of with other commercial waste. Instead, it is the user's responsibility to pass it to a designated collection point for the safe recycling of batteries.

TECHNICAL DATA

For technical data see eAir Installation manual except for following points:

Refrigerant: R410A

Refrigerant charge:

Pelican HP: 1.5 kg

Pegasos HP: 2.3 kg

Pallas HP: 5,2 kg

Compressor's nominal input power:

Pelican HP: 0,9 kW

Pegasos HP: 4,0 kW

Pallas HP: 5,5 kW

Compressor's oil type: POE RL32H

Compressor's oil charge:

Pelican HP: pre-filled by component supplier.

Pegasos HP: 1,2 l

Pallas HP: 1,9 l

Netto Weight of the Unit:

Pelican HP: 149,5 kg

Pegasos HP 244,6 kg

Pallas HP: 445,6 kg

Superheating control fuse (F3 Pegasos and F4 Pallas):
T2,5 A

Power supply connection:

Pelican HP: 1 x C16A /230V 1~

Pegasos HP: 3 x C16A /400V 3~

Pallas HP: 3 x C20A /400V 3~

Minimum allowed airflow when heat pump is in operation:

Pelican: 104 l/s (375 m³/h)

Pegasos: 120 l/s (432 m³/h)

Pallas: 200 l/s (720 m³/h)

NOTE!



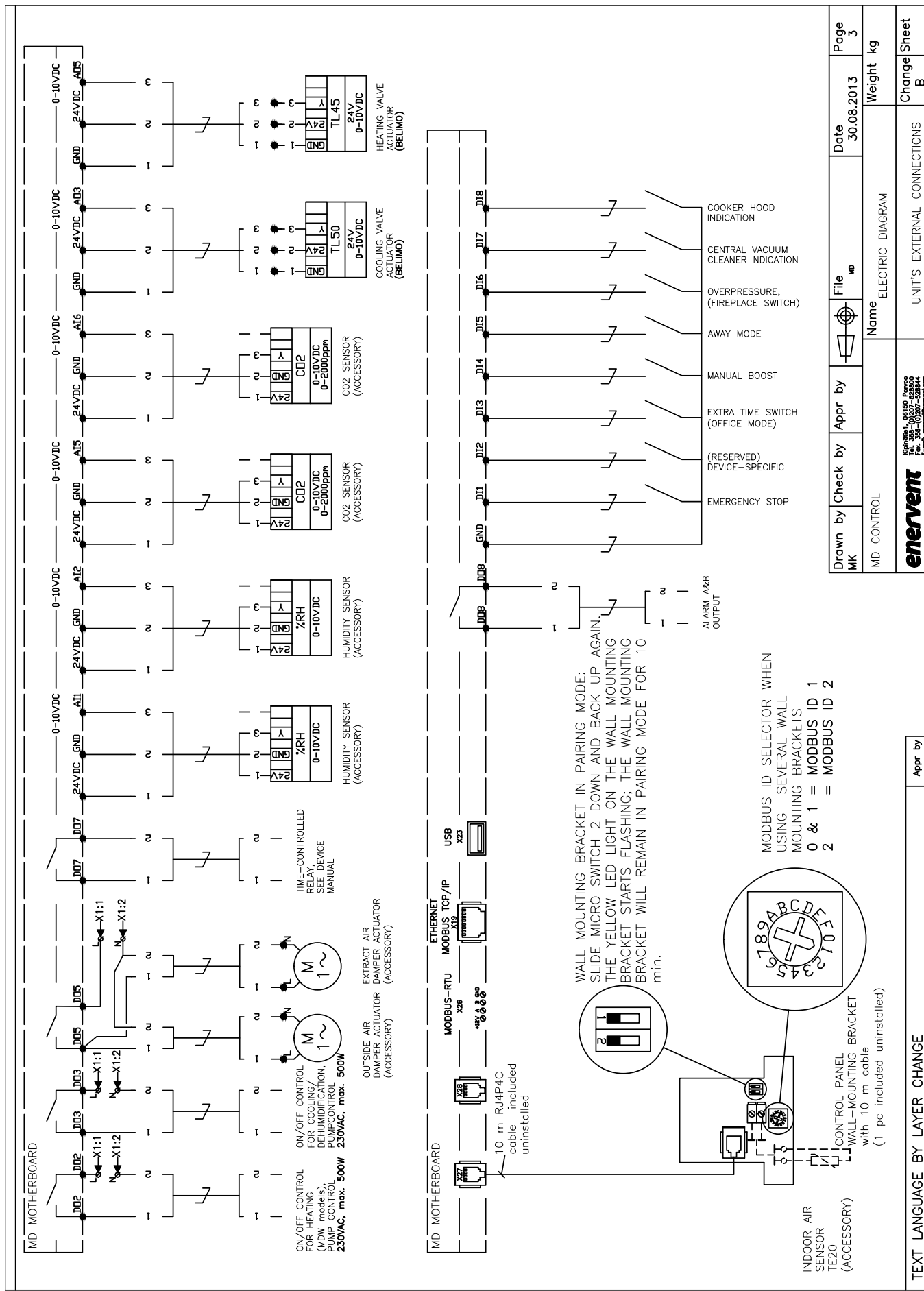
NOTE: Wrong phase order will prevent the heat pump from operating (Pegasos HP and Pallas HP only)

SERVICE RECORD FOR HEAT PUMP UNIT

Owner of the Heat Pump Unit:	
Location of the Heat Pump Unit	
Street address:	
Postal Code:	
City:	
Country:	
Unit system identification:	
Unit Model:	
Serial Number:	
Refrigerant Type	
Refrigerant amount:	

Annual refrigerant leakage test

Test done by:	Date:	Test passed: accepted/rejected



TEXT LANGUAGE BY LAYER CHANGE

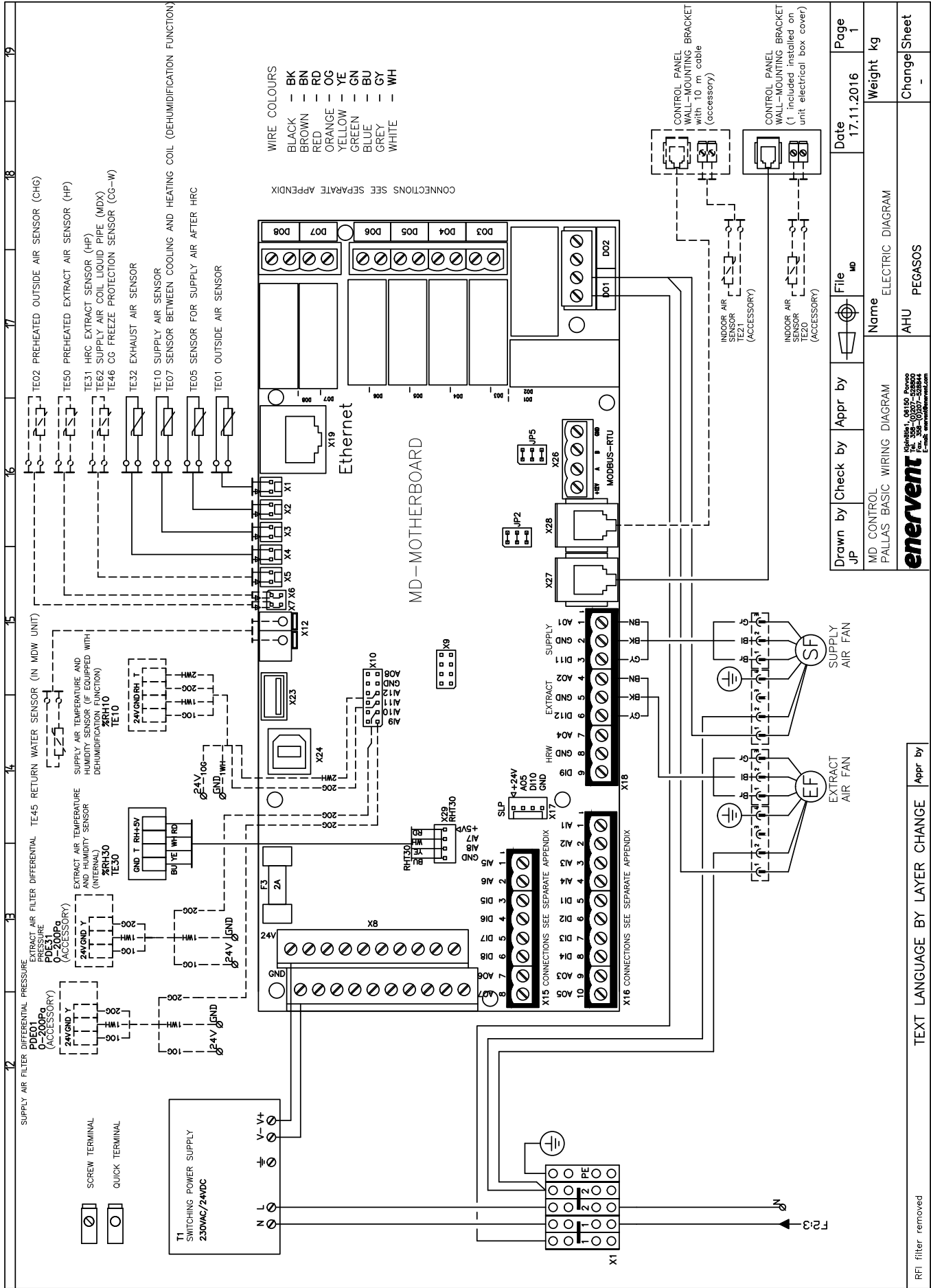
Appr by

enervent
Via S. Maria 1, 00197 Roma
Tel. +39 06 577 32844
E-mail: enervent@enervent.com

UNIT'S EXTERNAL CONNECTIONS

Change Sheet
B

Drawn by MK	Check by	Appr by	File mo	Date 30.08.2013	Page 3
MD CONTROL			Name ELECTRIC DIAGRAM	Weight kg	Change Sheet B



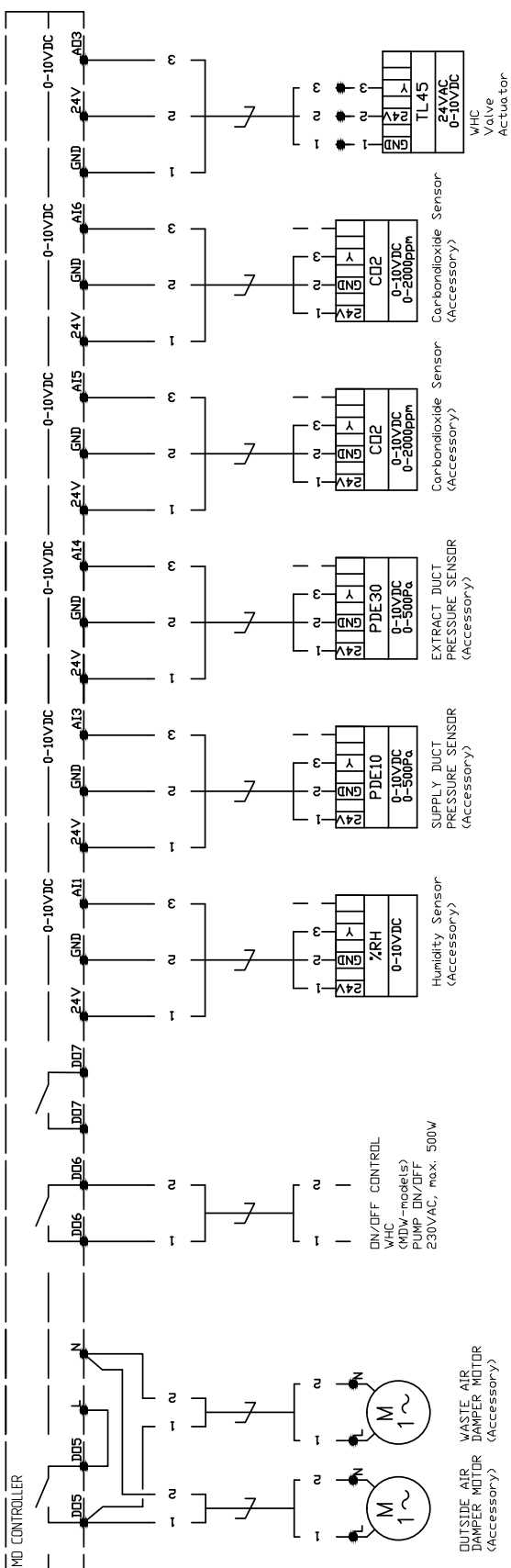
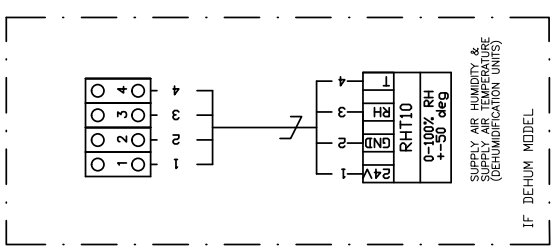
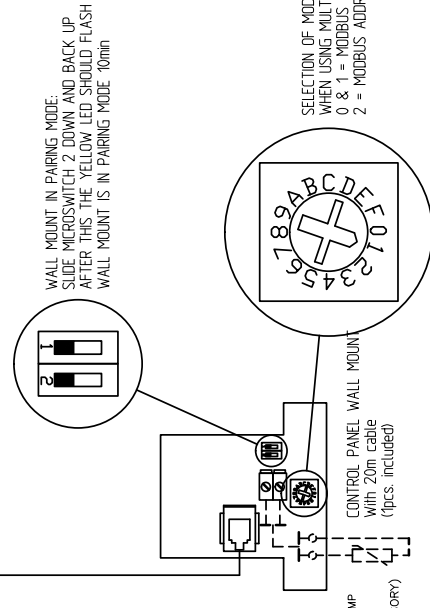
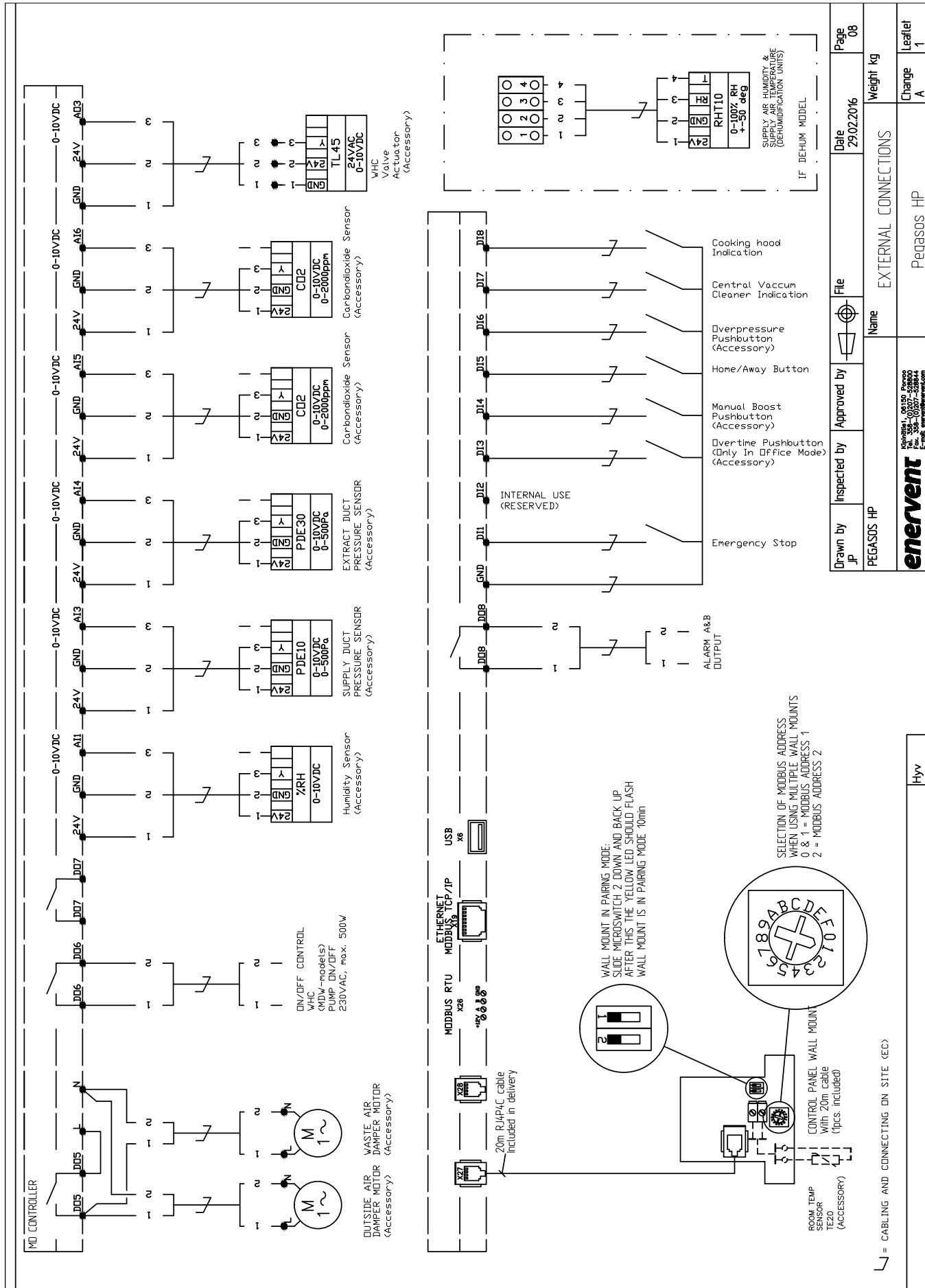
Drawn by	Check by	Appr by	File	Date	Page
JP			MD	17.11.2016	1
Name			ELECTRIC DIAGRAM		
MD CONTROL PALLAS BASIC WIRING DIAGRAM			AHU PEGASOS		
Weight			kg		
Change			Sheet		

RFI filter removed

TEXT LANGUAGE BY LAYER CHANGE

enervent
 01000341 010119 020000
 01000341 010119 020000
 Fax: 352-30507-32844
 E-mail: enervent@enervent.com

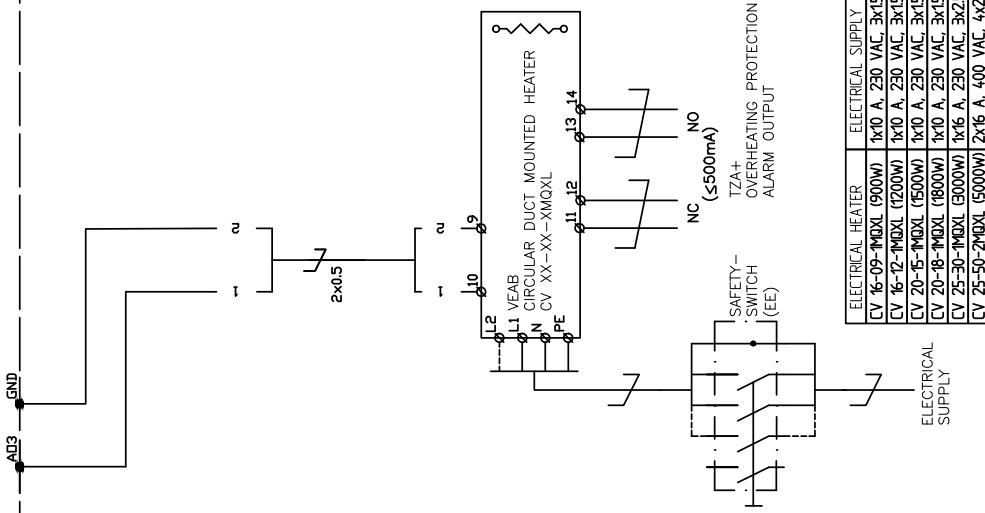




Drawn by JP	Inspected by PEGASOS HP	Approved by	File	Date 29.02.2016	Page 08
Name EXTERNAL CONNECTIONS			Weight kg		
PEGASOS HP			Change A		
enervent			Leaflet 1		
Headquarters: 01150 Praha Tel: 308 0007-02800 Fax: 308 0007-02844 E-mail: info@enervent.cz			Pegasos HP		

U = CABLING AND CONNECTING ON SITE (EC)

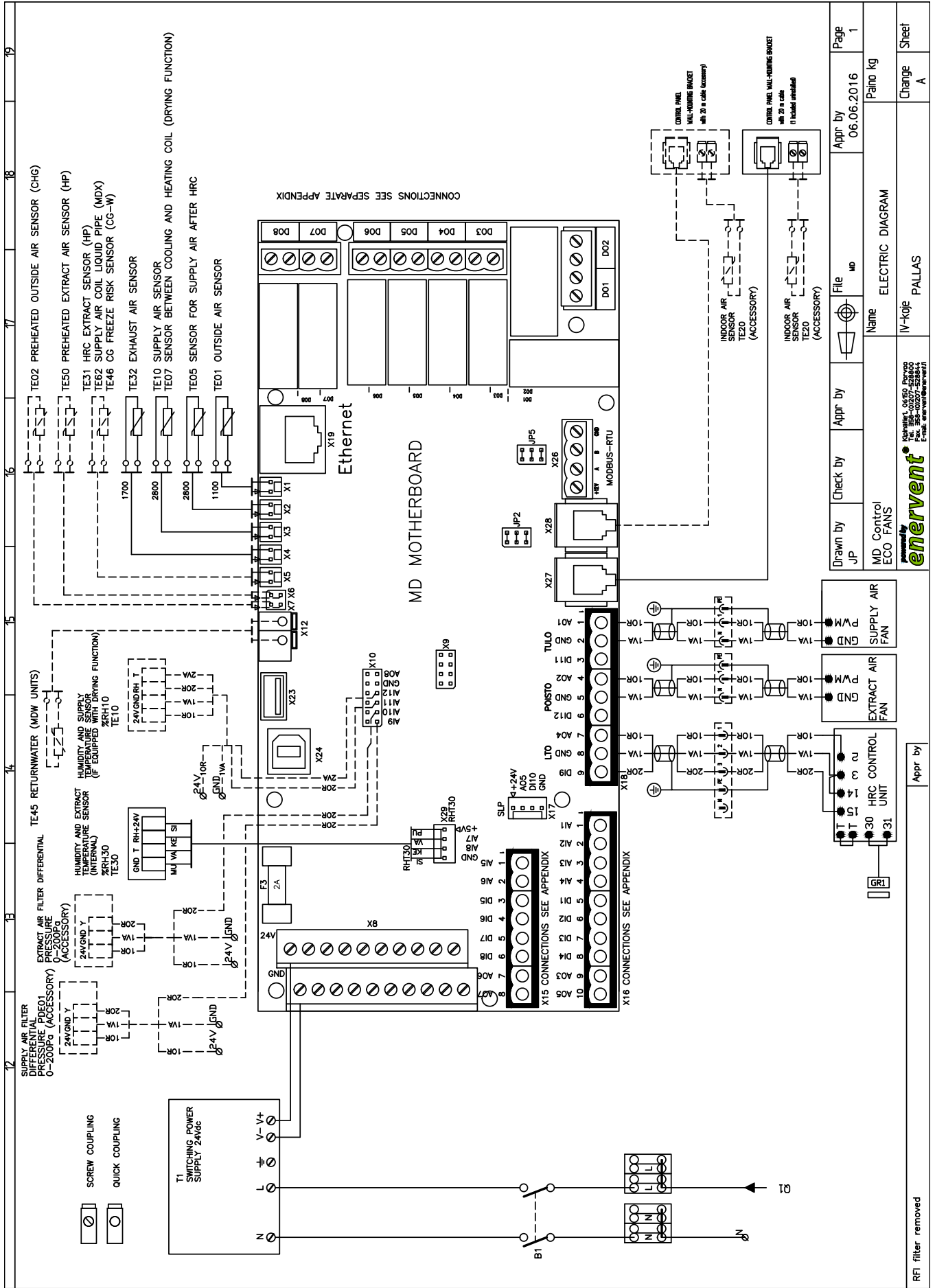
MD-CARD
 SUPPLY AIR AUXILIARY HEATER REGULATION (only HP and MDX models)
 0-10VDC
 A03 GND



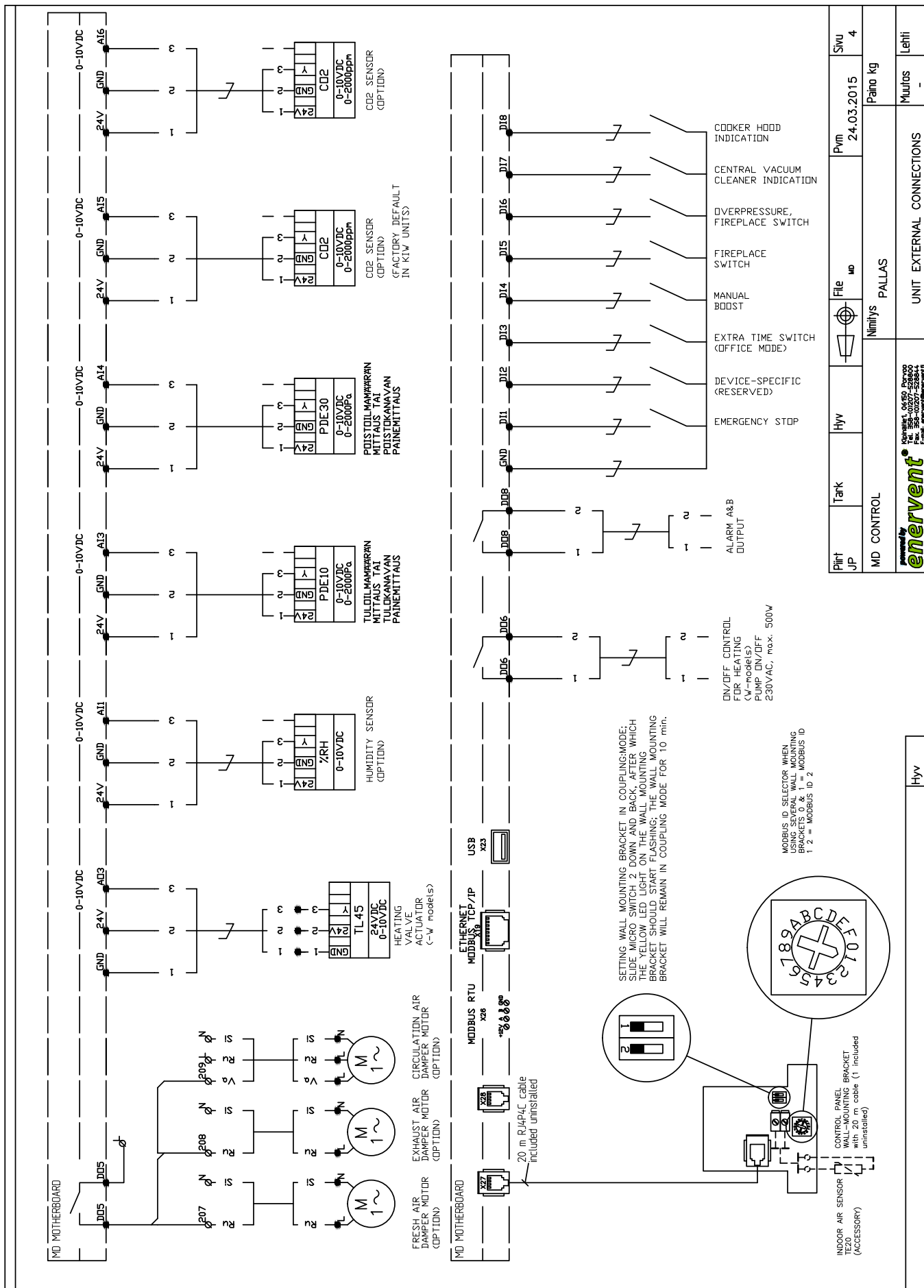
Piirit JP	Tark	Hyv	File	Pvm	Sivu
			mo	04.08.2016	1
MD-CONTROL			Nimitys	Paino kg	
			ELECTRICAL DIAGRAM		
enervent			Muutos B		
Koskela, OY:O Puh. +358-9-2017-50800 Faksi +358-9-2017-50800 E-mail: info@enervent.com			Lehti 1		
			SUPPLY AUXILIARY HEATER		

Hyv



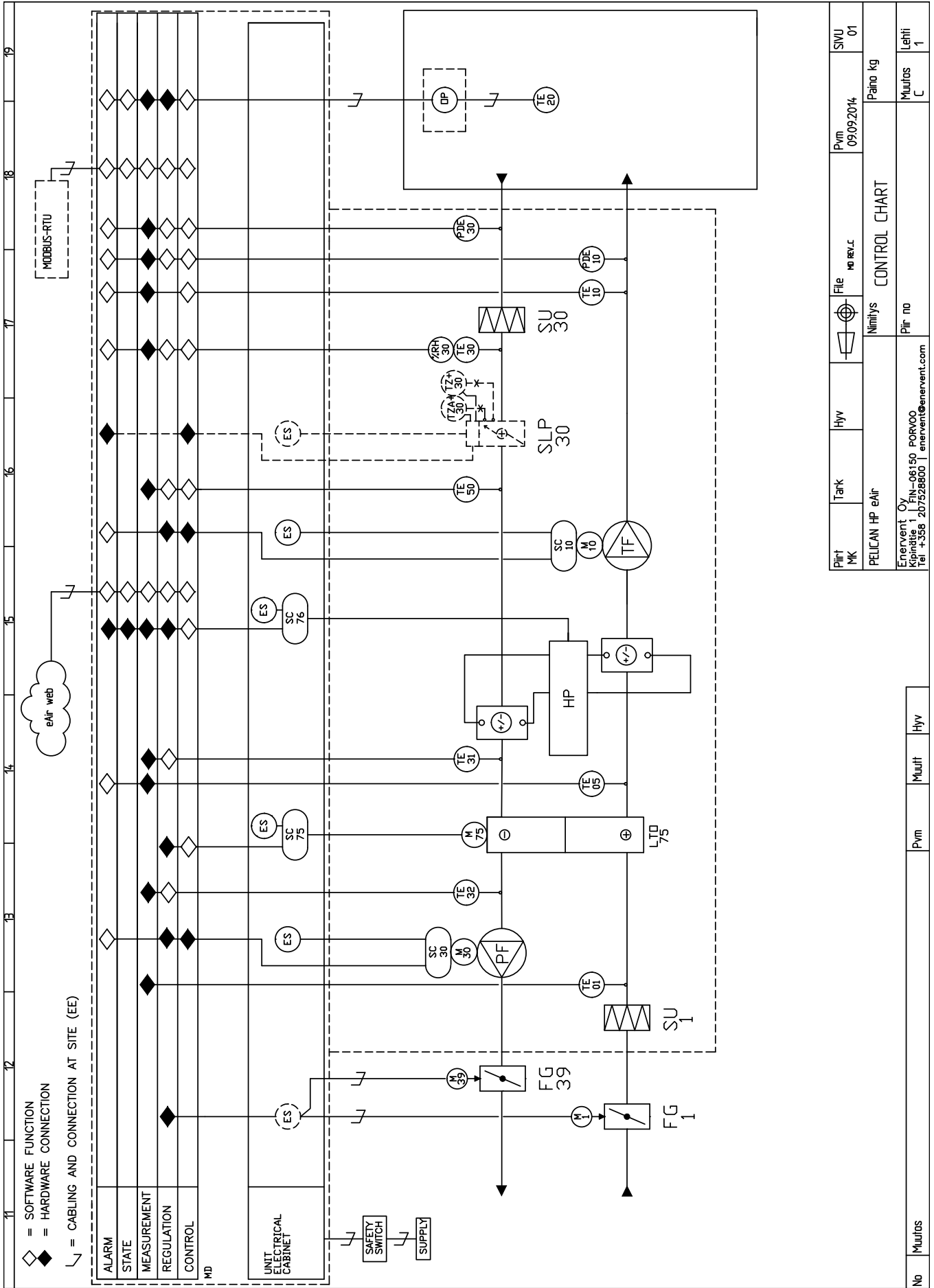


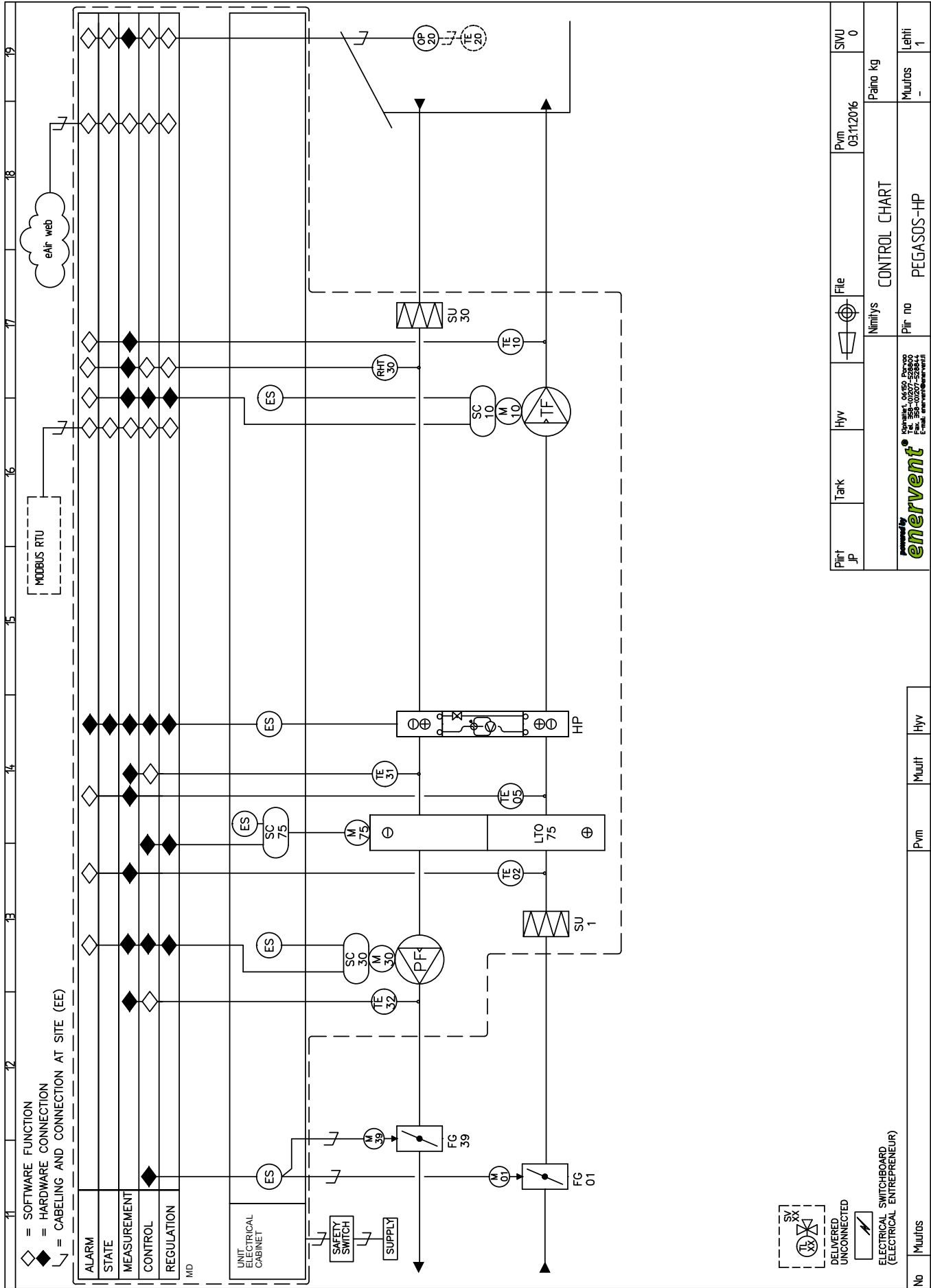
Drawn by JP	Check by	Appr by	File md	Appr by 06.06.2016	Page 1
MD Control ECO FANS			Name ELECTRIC DIAGRAM	Change A	Sheet
 Ichniaki 6650 Praha tel. 352-0257-52800 fax. 352-0257-52801 e-mail. info@enervent.cz			IV-koje PALLAS	Change A	Sheet

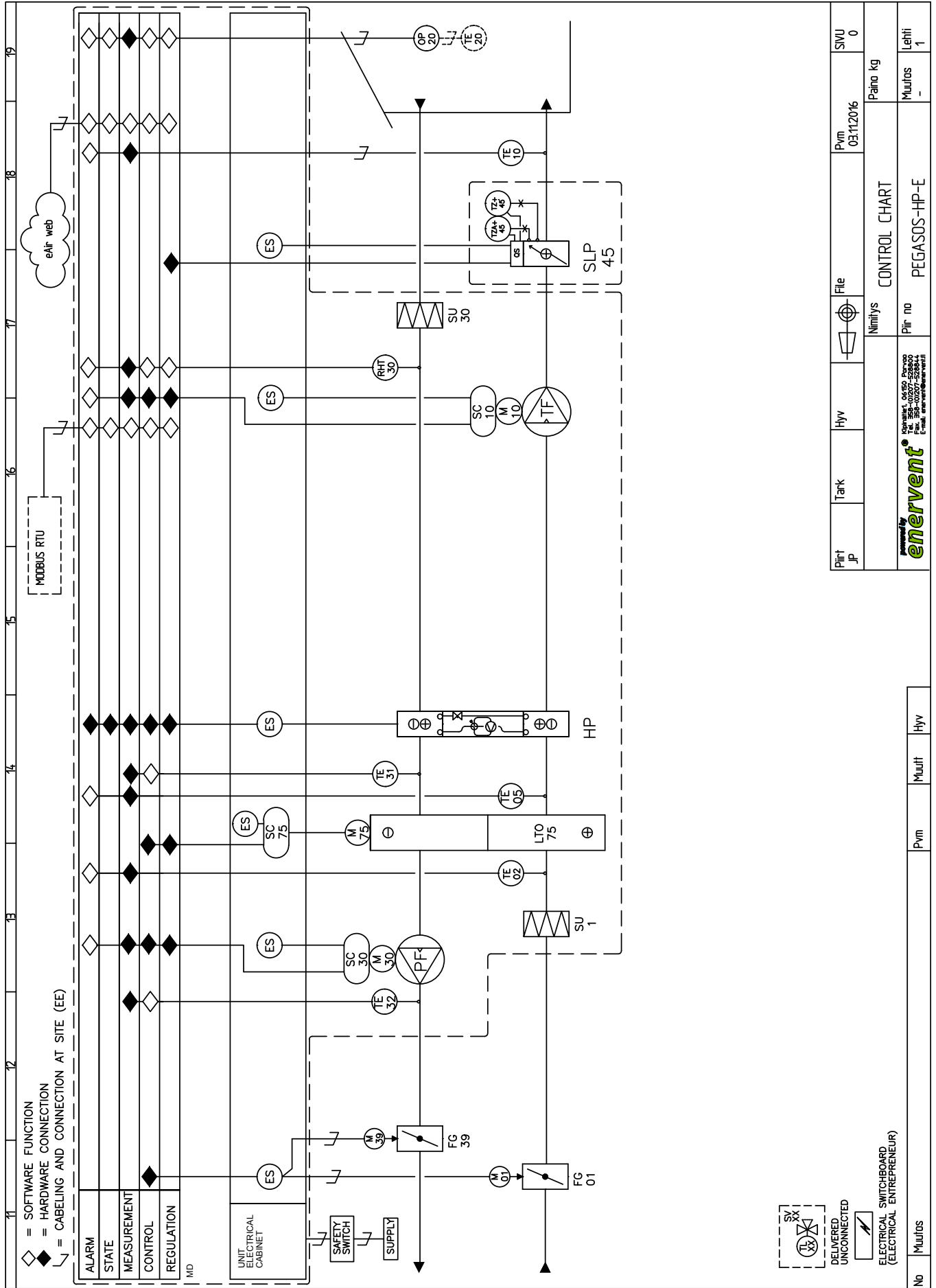


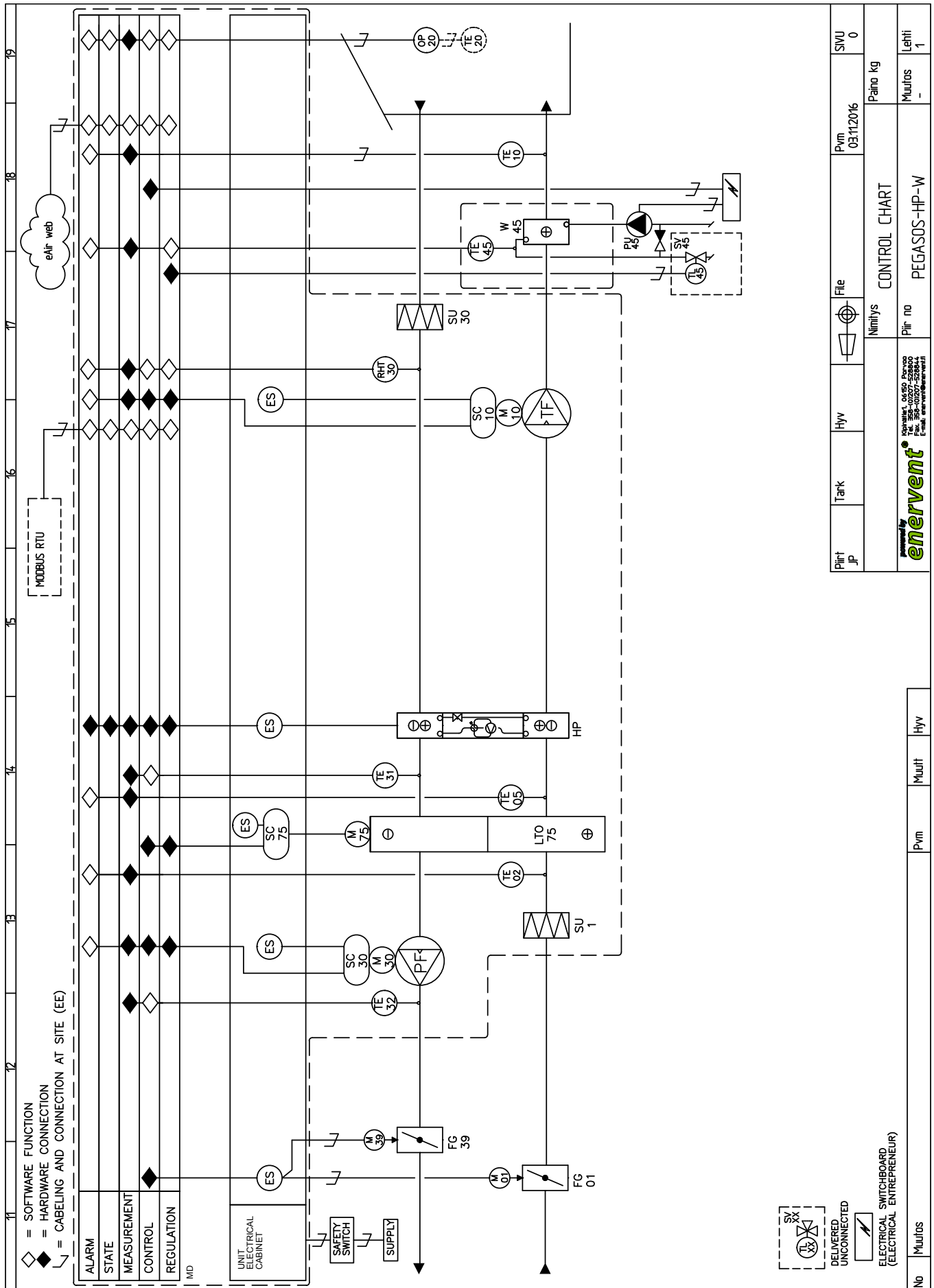
Piirit JP	Tark	Hyv	File md	Pvm 24.03.2015	Sivu 4
MD CONTROL			Nimitys PALLAS	Paino kg	Muutos
			UNIT EXTERNAL CONNECTIONS		
			Lehti		

CONTROL DIAGRAM





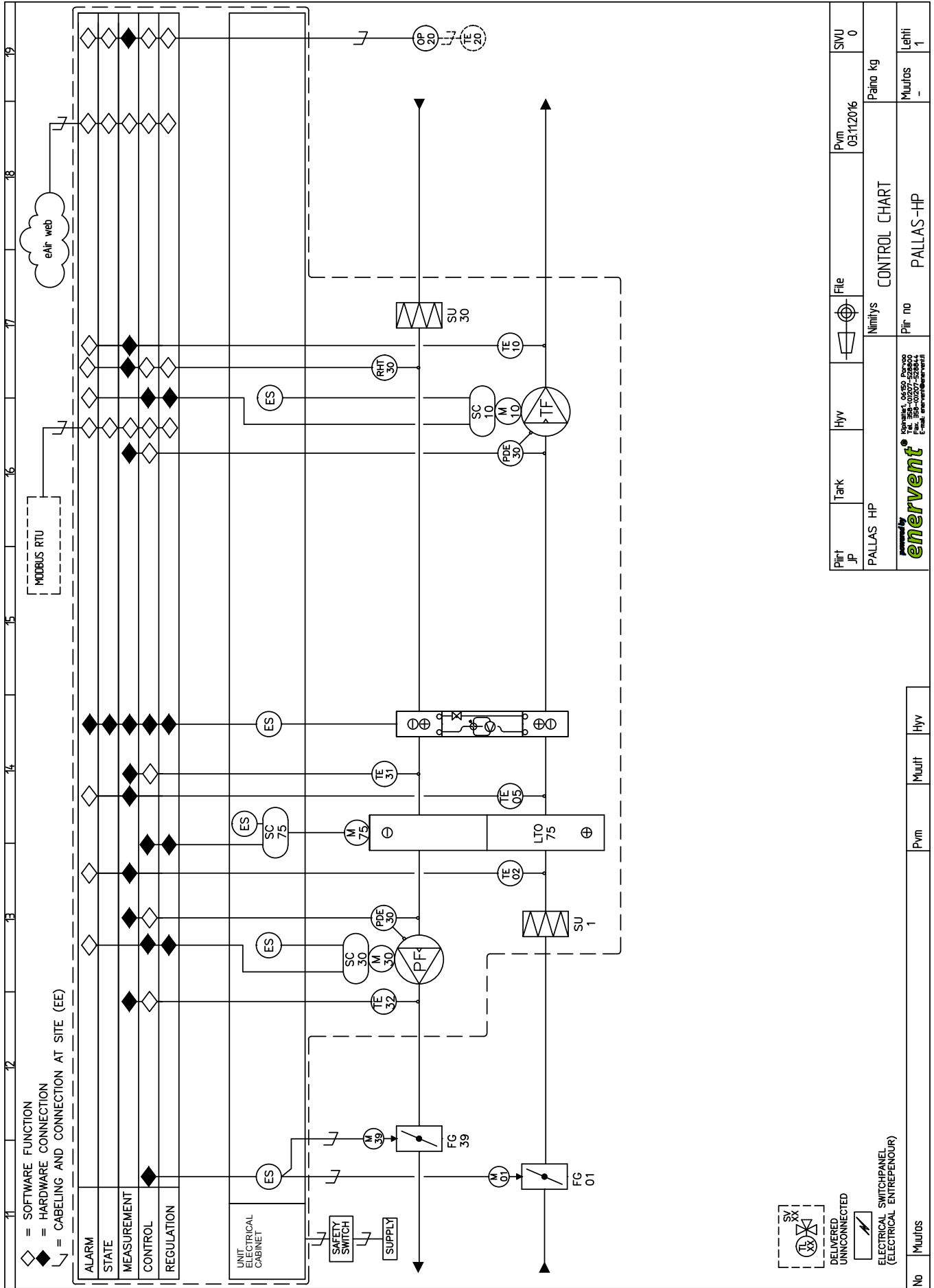




Piirt	Tank	Hyy	File	Pvm	SWU
JP			Nimilys	03.11.2016	0
CONTROL CHART				Paino kg	Lehti
 Tehnillist, Oleskes, Puhut Tel. 358-0207-52800 Fax. 358-0207-52801 E-mail. info@enervent.com				Piir no	Muutos
				PEGASOS-HP-W	1

No	Muutos	Pvm	Muutit	Hyy





Piiri JP	Tark PALLAS HP	Hyy	File	Pvm 03:11:2016	SIVU 0
Nimitys PALLAS HP			Paino kg		
Piiro no PALLAS-HP			Muutos -		
 Kivimäki, Oulussa Puh. 0207-528400 Faksi 0207-528411 Email: info@enervent.fi			Lethi 1		

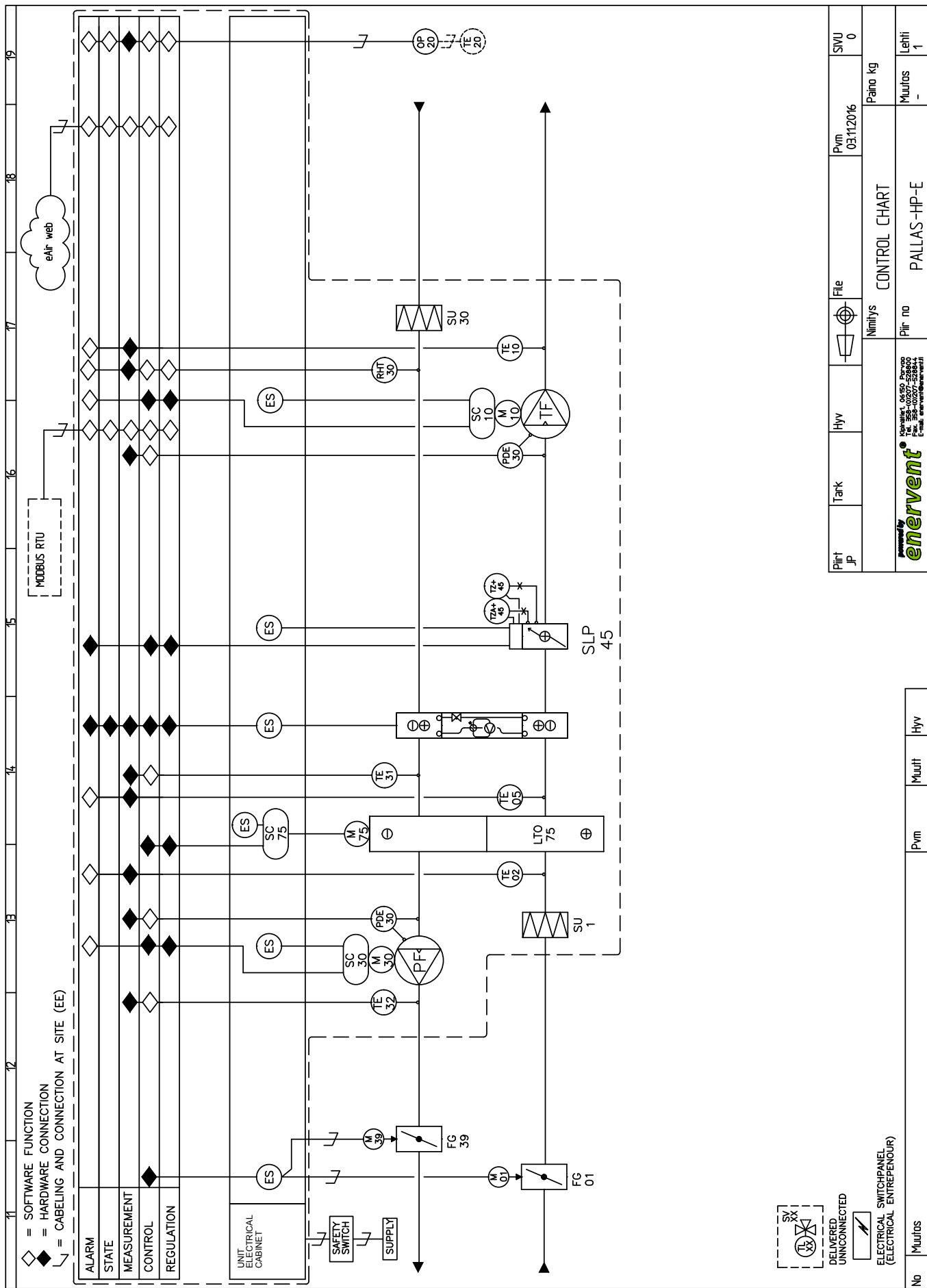
No	Muutos	Pvm	Muutt	Hyy
----	--------	-----	-------	-----

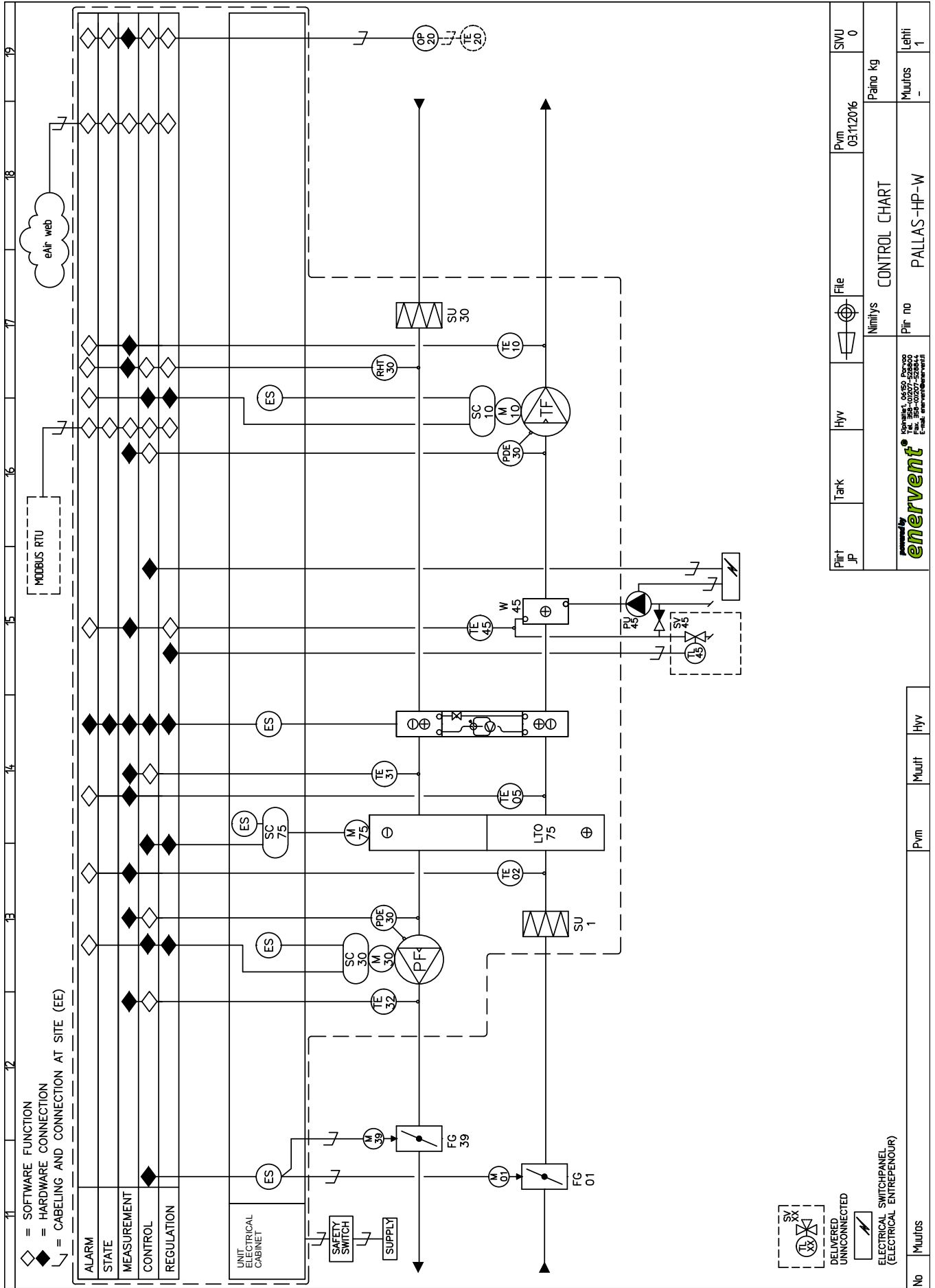


DELIVERED
UNCONNECTED



ELECTRICAL SWITCHPANEL
(ELECTRICAL ENTREPRENEUR)





Enervent Oy
Kipinätie 1, FI-06150 PORVOO
Phone: +358 207 528 800
enervent@enervent.com
www.enervent.com

enervent